

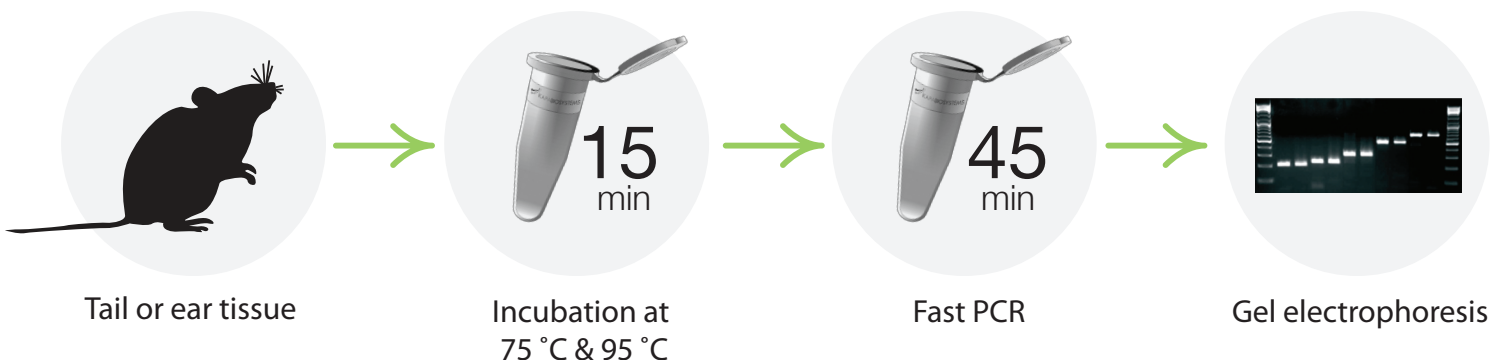


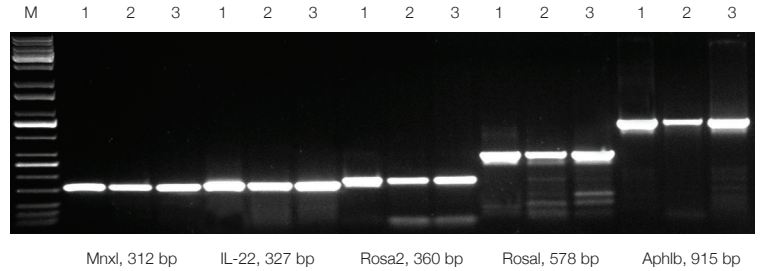
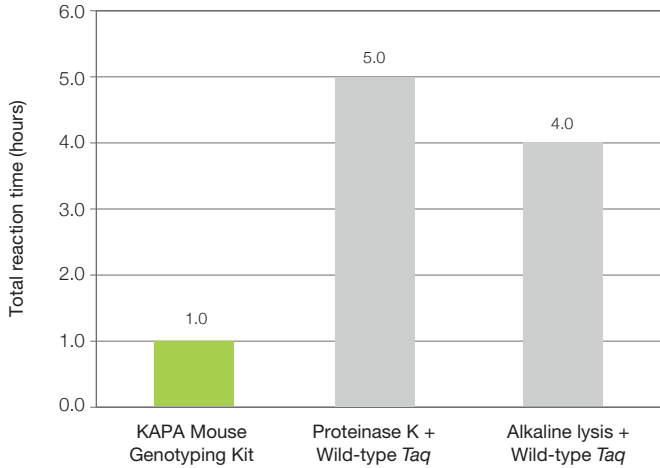
# KAPA Mouse Genotyping Kits

**Kits contain everything you need for the rapid extraction and amplification of DNA from mouse tissue:**

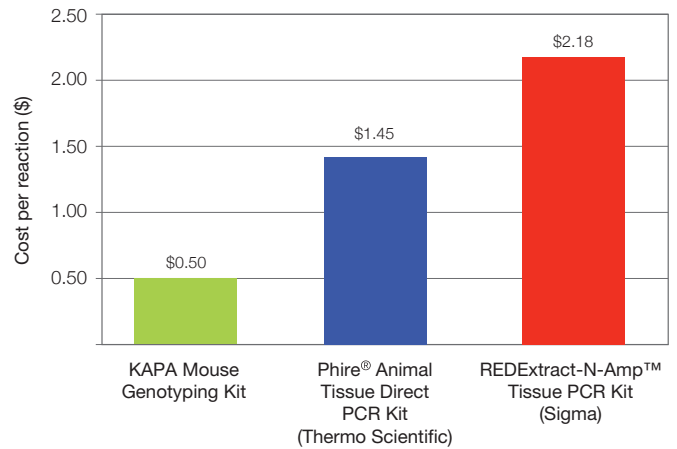
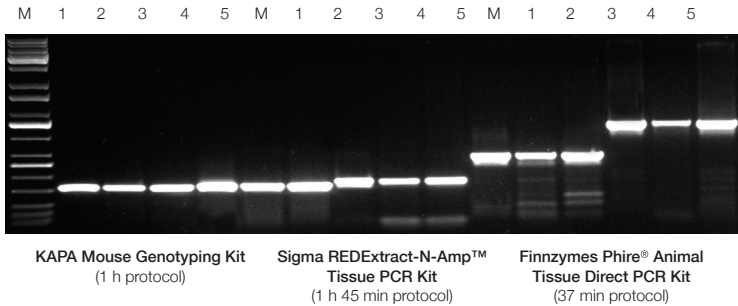
- KAPA Express Extract - 15 minute extraction using no organic solvents and requiring no pH neutralization or centrifugation.
- KAPA2G Fast Genotyping Mix - 45 minute amplification using a novel DNA polymerase engineered for high processivity and extreme speed.
- Available in a convenient master mix format with loading dye, in both hot start and non-hot start formulations.

**From tail to type in 1 hour!**





**The KAPA Mouse Genotyping Kit outperforms crude DNA extraction methods used for mouse genotyping, in significantly shorter turnaround times.** Results for five amplicons (312 – 915 bp) generated with the KAPA Mouse Genotyping Kit (1) were compared to those obtained with two commonly used methods (2 and 3). With the KAPA Mouse Genotyping Kit, DNA lysates were prepared from mouse tails with the rapid (15 min), single-tube KAPA Express Extract system. Amplification with the KAPA2G Fast HotStart ReadyMix with dye was completed in 45 min. In contrast, DNA lysates were prepared with a ~3.5-hour Proteinase K protocol (2) or a rapid (~2.5 h) alkaline lysis method (3). In both cases, amplification was performed with wild-type *Taq* (1.5 h cycling protocol). Results obtained with the KAPA Mouse Genotyping Kit were equal or better (more specific) than those obtained with other methods, which (depending on the exact DNA extraction protocol used), may take at least four times as long, or up to 1 day to complete.



**The KAPA Mouse Genotyping Kit performs as well or better than other commercial kits used for mouse genotyping at lower cost.** Results for five amplicons (312 – 915 bp) generated with the KAPA Mouse Genotyping Kit were compared to those obtained with the Phire<sup>®</sup> Animal Tissue Direct PCR Kit (Finnzymes), designed for direct PCR from animal tissue without purification, and the REExtract-N-Amp<sup>™</sup> Tissue PCR Kit (Sigma), designed for rapid extraction and amplification of genomic DNA from animal tissues.

For further information, please contact:

**ORDERING INFORMATION**

Description	Code	Kit contents
KAPA Mouse Genotyping Kit	KK7302	500 rxn
KAPA Mouse Genotyping Kit (HotStart)	KK7352	500 rxn
KAPA2G Fast Genotyping PCR Mix	KK5121	500 rxn
KAPA2G Fast Genotyping PCR Mix (HotStart)	KK5621	500 rxn