

# Anti-beta Actin Monoclonal Antibody



<u>Catalog No.</u>	<u>Size</u>
E021020-01	100µl
E021020-02	500µl

<b>Product Name</b>	Anti-beta Actin Monoclonal Antibody
<b>Product type</b>	Loading Control Antibody
<b>Application</b>	WB, ELISA, Dot Blot
<b>Description</b>	Mouse Monoclonal to beta Actin antibody
<b>Immunogen</b>	Beta actin N-terminal peptide-KLH conjugates
<b>Specificity</b>	Reacts with beta Actin from human, mouse, rat, rabbit or chicken. Beta Actin from other species may also be detectable.

## Background Information

All eukaryotic cells express Actin, which often constitutes as much as 50% of total cellular protein. Actin filaments can form both stable and labile structures and are crucial components of microvilli and the contractile apparatus of muscle cells. Beta actin is one of six different actin isoforms which have been identified. Actins are highly conserved proteins that are involved in cell motility, structure and integrity. Be aware when using beta actin antibodies as loading controls that although beta actin is normally the best protein to use as a loading control, under some conditions its amounts can vary between samples. In particular, expression of Beta actin in adipose tissue is very low.

## Application Notes

Optimal working dilutions should be determined experimentally by the investigator. Suggested starting dilutions are as follows: Western blot (1:1000-1:10,000). The antibody recognizes a 42kDa band in a Western Blot analysis. Optimal dilutions for other applications should be determined by the end user experimentally.

## Host

Mouse

## Clonality

N/A

## Storage Buffer

PBS, pH 7.4 with 0.05% sodium azide.

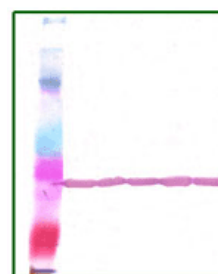
## Form

Liquid, 1.000mg/ml

## Storage Instructions

Stable for 1 year at -20°C from date of shipment. For maximum recovery of product, centrifuge the original vial after thawing and prior to removing the cap. Aliquot to avoid repeated freezing and thawing. Aliquot will be stable at 4°C for 3 months.

## Images



Western blot analysis of beta Actin expression in 293 cells. 20µg of total cell lysates with anti-beta Actin monoclonal antibody.