

# Anti-alpha Tubulin Monoclonal Antibody



<u>Catalog No.</u>	<u>Size</u>
E021030-01	100µl
E021030-02	500µl

<b>Product Name</b>	Anti-alpha Tubulin Monoclonal Antibody [A10]
<b>Product type</b>	Loading Control Antibody
<b>Application</b>	WB, IF
<b>Description</b>	Mouse Monoclonal to alpha Tubulin antibody
<b>Immunogen</b>	Recombinant alpha Tubulin protein from bacteria
<b>Specificity</b>	Recognizes alpha Tubulin from Human, Mouse, Tetrahymena, dictyostelium, Saccharomyces.

## Background Information

Microtubules are involved in a wide variety of cellular activities ranging from mitosis and transport events to cell movement and the maintenance of cell shape. Tubulin itself is a globular protein which consists of two polypeptides (alpha and beta tubulin). Alpha and beta tubulin dimers are assembled to 13 protofilaments that form a microtubule of 22 nm diameter. Tyrosine ligase adds a C-terminal tyrosin to monomeric alpha tubulin. Assembled microtubules can again be detyrosinated by a cytoskeleton associated carboxypeptidase. Detyrosinated alpha tubulin is referred to as Glu-tubulin. Another post-translational modification of detyrosinated alpha tubulin is C-terminal polyglutamylation which is characteristic for microtubules in neuronal cells and the mitotic spindle. Alpha tubulin is not suitable as a loading control in adipose tissue as expression of tubulin in adipose tissue is very low.

## Application Notes

Optimal working dilutions should be determined experimentally by the investigator. Suggested starting dilutions are as follows: Western blot (1:1000-1:10,000), Immunofluorescence(1:200-1:800). The antibody recognizes a 50kDa band in a Western Blot analysis.

## Host

Mouse

## Clonality

A10

## Storage Buffer

PBS, pH 7.4 with 0.05% sodium azide.

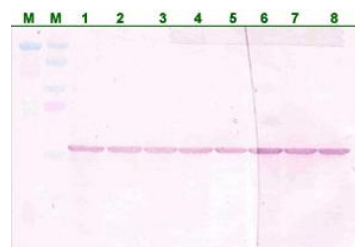
## Form

Liquid, 1.000mg/ml

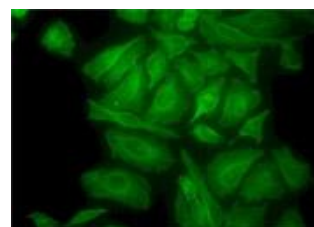
## Storage Instructions

Stable for 1 year at -20°C from date of shipment. For maximum recovery of product, centrifuge the original vial after thawing and prior to removing the cap. Aliquot to avoid repeated freezing and thawing. Aliquot will be stable at 4°C for 3 months.

## Images



Western blot analysis of 293 cells lysates with anti-alpha Tubulin antibody(lane 1-5) and anti-beta Tubulin(lane 6-8) antibody.



Immunofluorescence analysis of alpha Tubulin with anti-alpha Tubulin monoclonal antibody on HeLa cell.