

Anti-GFP Tag Monoclonal Antibody



Catalog No.	Size
E022030-01	100µl
E022030-02	500µl

Product Name	Anti-GFP Tag Monoclonal Antibody [GF28R]
Product type	Tag Antibody
Application	WB, ICC/IF, IP, ELISA, Dot Blot
Description	Mouse Monoclonal to GFP tag antibody
Immunogen	GFP from the jellyfish Aequorea victoria N-Terminal peptide-KLH conjugates
Specificity	Recognizes native and denatured forms of GFP and its variants EGFP, YFP, EYFP, and CFP.

Background Information

Green fluorescence protein (GFP) is a 27 kDa protein derived from the jellyfish *Aequorea victoria*, which emits green light when excited by blue light. GFP fluorescence is stable under fixation conditions and suitable for a variety of applications. GFP has been widely used as a reporter for gene expression, enabling researchers to visualize and localize GFP-tagged proteins within living cells without the need for chemical staining. Other applications of GFP include assessment of protein protein interactions through the yeast two hybrid system and measurement of distance between proteins through fluorescence energy transfer (FRET) protocols.

Application Notes

Optimal working dilutions should be determined experimentally by the investigator. Suggested starting dilutions are as follows: Western blot (1:1000-1:10,000). Optimal dilutions for other applications should be determined by the end user experimentally.

Host

Mouse

Clonality

GF28R

Storage Buffer

PBS, pH 7.4 with 0.05% sodium azide.

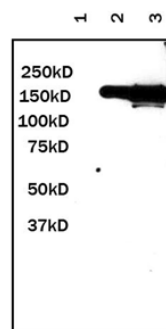
Form

Liquid, 1.000mg/ml

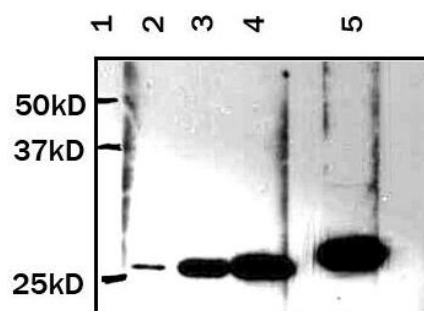
Storage Instructions

Stable for 1 year at -20°C from date of shipment. For maximum recovery of product, centrifuge the original vial after thawing and prior to removing the cap. Aliquot to avoid repeated freezing and thawing. Aliquot will be stable at 4°C for 3 months.

Images



Western blot of 10µg lysate from GFP fusion protein positive 293 cells with negative control(line 1), 1µg Anti-GFP antibody(line 2) and 10µg Anti-GFP antibody(line 3).



Western blot of 1µg(lane 2), 5µg(lane 3), 10µg(lane 4), 25µg(lane 5) lysate from GFP fusion protein positive 293 cells with 1/1000 dilution of Anti-GFP antibody.