

Plant-Actin Rabbit Polyclonal Antibody –Loading Control

Product Name: Plant-Actin Rabbit Polyclonal antibody

Immunogen: Synthetic peptide derived from within N-terminal residues of *Oryza sativa* actin (NP_001066233) conjugated to KLH

Purification: peptide affinity purification

Tested applications: WB

Recommended dilutions: WB: 1:2000~1:5000

Optimal dilutions/concentrations should be determined by the user.

Form: Liquid

Concentration: 0.5mg/ml in PBS, pH 7.4, containing 0.02% sodium azide and 50% glycerol

Storage: Plant-Actin PAB is stable for 1 month at 2-8 °C. For long term storage, Aliquot and store at -20 °C or below. Avoid repeated freezing and thawing cycles.

Reactivity:

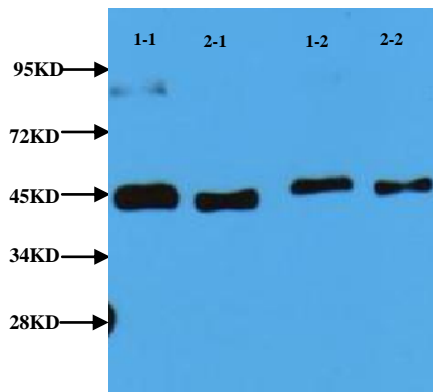
Arabidopsis Nicotiana tabacum Oryza sativa Hordeum vulgare

Predicted to work with:

Brassica napus Gossypium herbaceum Solanum tuberosum Setaria italic

Triticum monococcum Brachypodium distachyon Chrysanthemum seticuspe

Glycine max Mangifera Thellungiella halophila Zoysia japonica Isatis tinctoria



Western blot analysis using primary antibody Plant-actin

PAB Loading Control (TDYBIO SLP009P).

Lane1-1 lysates of *Nicotiana tabacum* 1:2000

Lane2-1 lysates of *Oryza sativa* 1:2000

Lane1-2 lysates of *Nicotiana tabacum* 1:5000

Lane2-2 lysates of *Oryza sativa* 1:5000

Second antibody using 1:10000 (TDYBIO E011)

ECL using Millipore (Merck) WBKLS0500