

## GAPDH Rabbit Polyclonal Antibody

Glyceraldehyde 3 phosphate dehydrogenase (GAPDH) is well known as one of the key enzymes involved in glycolysis. GAPDH is constitutively expressed in almost all tissues at high levels, therefore antibodies against GAPDH are useful as loading controls for Western Blotting. Some physiological factors, such as hypoxia and diabetes, increase GAPDH expression in certain cell types.

**Product Name:** GAPDH Rabbit Polyclonal antibody

**Immunogen:** Full-length GAPDH protein of human.

**Purification:** antigen affinity purification

**Tested applications:** WB, IHC, IF

**Recommended dilutions:** WB: 1:5000 IHC: 1:200 IF: 1:200

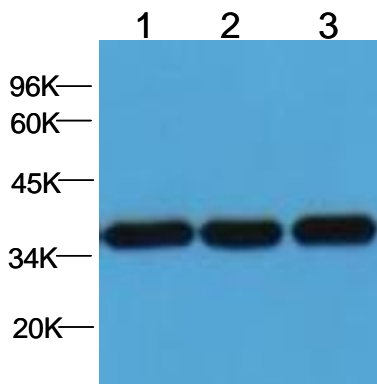
Optimal dilutions/concentrations should be determined by the end user.

**Form:** Liquid

**Concentration:** 1mg/ml in PBS, pH 7.4, containing 0.02% sodium azide and 50% glycerol

**Storage:** GAPDH PAB is stable for 1 month at 2-8 °C. For long term storage, Aliquot and store at -20 °C or below. Avoid repeated freezing and thawing cycles.

**Reactivity:** H, R, M, Mk, Dg, Ch Hm Rabbit



Western blot analysis of U2-OS cell lysate.

Lane1 GAPDH mAb(TDYbio M010 1:10000)

Lane2 GAPDH PAb (TDYbio SLP010 1:10000)

Lane3 GAPDH PAb (TDYbio SLP010 1:5000)