



**Human Choroid Plexus Fibroblast (HCPF) Lysate**  
Catalog Number: 1326(200 µg)/1326-4(400 µg)

**Product Information**

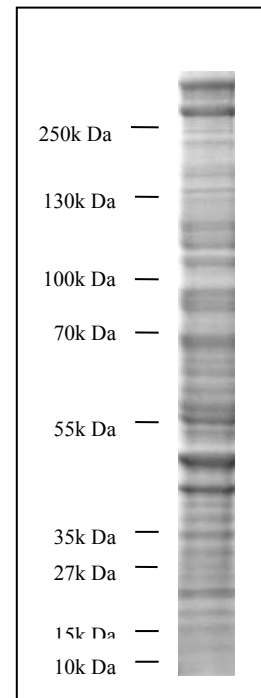
- Quantity: 200 µg/400 µg
- Concentration: 2 mg/ml/4 mg/ml
- Storage buffer: 1X reducing sample buffer (50 mM Tris-HCl pH 6.8, 5% glycerol, 1% SDS, 0.002% bromphenol blue, 5% beta-mercaptoethanol)
- Lysis buffer: Modified RIPA buffer (50 mM Tris-HCl pH 7.2, 150 mM NaCl, 1% NP-40, 1mM EDTA, 1 mM EGTA, 0.4 mM PMSF, 5 µg/ml aprotinin, 5 µg/ml leupeptin, 1 µg/ml pepstatin, 1 mM Na<sub>3</sub>VO<sub>4</sub>, 5 mM NaF)
- Quality control: Lysate quality was assured with a NuPAGE 4-12% Bis-Tris Gel stained with Coomassie brilliant blue.

**Storage/Handling**

Stable for 6 months at -20°C from date of shipment. For maximum recovery of product, centrifuge the original vial after thawing and before removing the cap. Aliquot to avoid repeated freezing and thawing.

**Application**

Cell lysate need to be boiled for 5 minutes before loading on SDS-PAGE for western blot. 40 µg per lane is recommended for mini gel.



QC SDS-PAGE gel