



## GeneQuery™ Human Cell Growth and Division qPCR Array Kit (GQH-CGD) Catalog #GK062

### Product Description

ScienCell's GeneQuery™ Human Cell Growth and Division qPCR Array Kit (GQH-CGD) is designed to facilitate gene expression profiling of 88 key genes involved in cell growth and division. Tight control of these processes is essential to ensure that the hereditary information is correctly passed on from parent cells to daughter cells, and that cell growth is strictly regulated. Failure of such control gives rise to mutations and/or tumorigenesis. Brief examples of how included genes may be grouped are shown below:

- **Cell cycle regulation:** ATM, CCNA2, CCNB1, CCNE2, CDC20, CDC25C, CDK1, CDK2, CHEK1, NBN, RAD1, RAD17
- **Mitosis:** APC/C complex, CDC genes, BUB1, BUB1B, EGF, EREG, KNTC1, NPM2, MAD2L1, MAD2L2, PKMYT1, TGFA, TGFB1, TTK
- **Meiosis:** APC/C complex, CDC genes, RAD51, RBX1, SKP1, SMC1A, SMC3
- **Spindle checkpoint:** AURKA, BIRC5, BUB1, CDC16, CDC27, DCTN1, KNTC1, PAFAH1B1, SMC1A, SMC3, STMN1, TTK

GeneQuery™ qPCR array kits are qPCR ready in a 96-well plate format, with each well containing one primer set that can specifically recognize and efficiently amplify a target gene's cDNA. The carefully designed primers ensure that: (i) the optimal annealing temperature in qPCR analysis is 65°C (with 2 mM Mg<sup>2+</sup>, and no DMSO); (ii) the primer set recognizes all known transcript variants of target gene, unless otherwise indicated; and (iii) only one gene is amplified. Each primer set has been validated by qPCR with melt curve analysis, and gel electrophoresis.

### GeneQuery™ qPCR Array Kit Controls

Each GeneQuery™ plate contains eight controls (Figure 1).

- Five target housekeeping genes ( $\beta$ -actin, GAPDH, LDHA, NONO, and PPIH), which enable normalization of data.
- The Genomic DNA (gDNA) Control (GDC) detects possible gDNA contamination in the cDNA samples. It contains a primer set targeting a non-transcribed region of the genome.
- Positive PCR Control (PPC) tests whether samples contain inhibitors or other factors that may negatively affect gene expression results. The PPC consists of a predispensed synthetic DNA template and a primer set that can amplify it. The sequence of the DNA template is not present in the human genome, and thus tests the efficiency of the polymerase chain reaction itself.
- The No Template Control (NTC) is strongly recommended, and can be used to monitor the DNA contamination introduced during the workflow such as reagents, tips, and the lab bench.

### Kit Components

<b>Component</b>	<b>Quantity</b>	<b>Storage</b>
GeneQuery™ array plate with lyophilized primers	1	4°C or -20°C
Optical PCR plate seal	1	RT
Nuclease-free H <sub>2</sub> O	2 mL	4°C

#### **Additional Materials Required (Materials Not Included in Kit)**

<b>Component</b>	<b>Recommended</b>
Reverse transcriptase	MultiScribe Reverse Transcriptase (Life Tech, Cat. #4311235)
cDNA template	Customers' samples
qPCR master mix	FastStart Essential DNA Green Master (Roche, Cat. #06402712001)

#### **Quality Control**

All the primer sets are validated by qPCR with melt curve analysis. The PCR products are analyzed by gel electrophoresis. Single band amplification is confirmed for each set of primers.

#### **Product Use**

GQH-CGD is for research use only. It is not approved for human or animal use, or for application in clinical or *in vitro* diagnostic procedures.

#### **Shipping and Storage**

The product is shipped at ambient temperature. Upon receipt, the plate should be stored at 4°C and is good for up to 12 months. For long-term storage (>1 year), store the plate at -20°C in a manual defrost freezer.

## Procedures

---

**Note:** The primers in each well are lyophilized.

1. Prior to use, allow plates to warm to room temperature.
2. Briefly centrifuge at 1,500x g for 1 minute before slowly peeling off the seal.
3. Prepare 20  $\mu$ l PCR reactions for one well as shown in Table 1.

Table 1

<b>cDNA template</b>	<b>0.2 – 250 ng</b>
2x qPCR master mix	10 $\mu$ l
Nuclease-free H <sub>2</sub> O	variable
<i>Total volume</i>	<i>20 <math>\mu</math>l</i>

**Important:** *Only use polymerases with hot-start capability to prevent possible primer-dimer formation. Only use nuclease-free reagents in PCR amplification.*

4. Add the mixture of 2x qPCR master mix, cDNA template, and nuclease-free H<sub>2</sub>O to each well containing the lyophilized primers. Seal the plate with the provided optical PCR plate seal.

**Important:** *In NTC control well, do NOT add cDNA template. Add 2x qPCR master mix and nuclease-free H<sub>2</sub>O only.*

5. Briefly centrifuge the plates at 1,500x g for 1 minute at room temperature. For maximum reliability, replicates are strongly recommended (minimum of 3).
6. For PCR program setup, please refer to the instructions of the master mix of the user's choice. We recommend a typical 3-step qPCR protocol for a 200nt amplicon:

### Three-step cycling protocol

Step	Temperature	Time	Number of cycles
Initial denaturation	95°C	10 min	1
Denaturation	95°C	20 sec	40
Annealing	65°C	20 sec	
Extension	72°C	20 sec	
Data acquisition	Plate read		
<i>Recommended</i>	<i>Melting curve analysis</i>		1
Hold	4°C	Indefinite	1

7. (Optional) Load the PCR products on 1.5% agarose gel and perform electrophoresis to confirm the single band amplification in each well.

Figure 1. Layout of GeneQuery™ qPCR array kit controls.

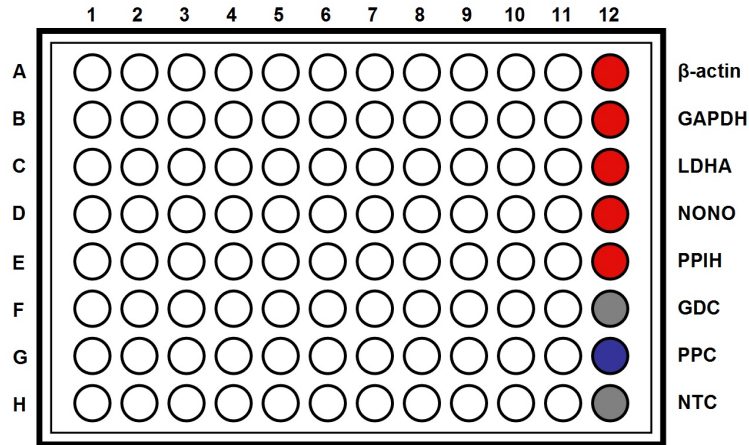


Table 2. Interpretation of control results:

<i>Controls</i>	<i>Results</i>	<i>Interpretation</i>	<i>Suggestions</i>
Housekeeping gene controls	Variability of a housekeeping gene's C <sub>q</sub> value	The expression of the housekeeping gene is variable in samples; cycling program is incorrect	Choose a constantly expressed target, or analyze expression levels of multiple housekeeping genes; use correct cycling program and make sure that all cycle parameters have been correctly entered
gDNA Control (GDC)	C <sub>q</sub> ≥ 35	No gDNA detected	N/A
	C <sub>q</sub> < 35	The sample is contaminated with gDNA	Perform DNase digestion during RNA purification step
Positive PCR Control (PPC)	C <sub>q</sub> > 30; or The C <sub>q</sub> variations > 2 between qPCR Arrays.	Poor PCR performance; possible PCR inhibitor in reactions; cycling program incorrect	Eliminate inhibitor by purifying samples; use correct cycling program and make sure that all cycle parameters have been correctly entered
No Template Control (NTC)	Positive	DNA contamination in workflow	Eliminate sources of DNA contamination (reagents, plastics, etc.)

Figure 2. A typical amplification curve showing the amplification of a qPCR product.



Figure 3. A typical melting peak of a qPCR product.



## Quantification Method: Comparative $\Delta\Delta Cq$ (Quantification Cycle Value) Method

1. **Note:** Please refer to your qPCR instrument's data analysis software for data analysis. The method provided here serves as guidance for quick manual calculations.

You can use one or more housekeeping genes as a reference to normalize samples.

**Important:** We highly recommend using all 5 housekeeping genes included in this kit,  $\beta$ -actin, GAPDH, LDHA, NONO, and PPIH.

2. For a single housekeeping gene,  $\Delta Cq$  (ref) is the quantification cycle number change for that housekeeping gene (HKG) between an experimental sample and control sample.

$$\Delta Cq \text{ (ref)} = Cq \text{ (HKG, experimental sample)} - Cq \text{ (HKG, control sample)}$$

When using multiple housekeeping genes as a reference, we recommend normalizing using the geometric mean [1] of the expression level change, which is the same as normalizing using the arithmetic mean of  $\Delta Cq$  of the selected housekeeping genes.

$\Delta Cq \text{ (ref)} = \text{average} (\Delta Cq \text{ (HKG1)}, \Delta Cq \text{ (HKG2)}, \dots, \Delta Cq \text{ (HKG n)})$  (n is the number of housekeeping genes selected)

**If** using all 5 housekeeping genes included in this kit,  $\beta$ -actin, GAPDH, LDHA, NONO, and PPIH, use the following formula:

$$\Delta Cq \text{ (ref)} = (\Delta Cq(\beta\text{-actin}) + \Delta Cq(\text{GAPDH}) + \Delta Cq(\text{LDHA}) + \Delta Cq(\text{NONO}) + \Delta Cq(\text{PPIH})) / 5$$

**Note:**  $\Delta Cq \text{ (HKG)} = Cq \text{ (HKG, experimental sample)} - Cq \text{ (HKG, control sample)}$ , and  $\Delta Cq \text{ (HKG)}$  value can be positive, 0, or negative.

3. For any of your genes of interest (GOI),

$$\Delta Cq \text{ (GOI)} = Cq \text{ (GOI, experimental sample)} - Cq \text{ (GOI, control sample)}$$

$$\Delta\Delta Cq = \Delta Cq \text{ (GOI)} - \Delta Cq \text{ (ref)}$$

$$\text{Normalized GOI expression level fold change} = 2^{-\Delta\Delta Cq}$$

## References

[1] Vandesompele J, De Preter K, Pattyn F, Poppe B, Van Roy N, De Paepe A, Speleman F. (2002) "Accurate normalization of real-time quantitative RT-PCR data by geometric averaging of multiple internal control genes." *Genome Biol.* 3(7): 1-12.

### Example: Comparative $\Delta\Delta Cq$ (Quantification Cycle Value) Method

---

Table 3. Cq (Quantification Cycle) values of 2 genes-of-interest and 5 housekeeping genes obtained for experimental and control samples.

Samples	Genes of Interest		Housekeeping Genes				
	GOI1	GOI2	<i><math>\beta</math>-actin</i>	<i>GAPDH</i>	<i>LDHA</i>	<i>NONO</i>	<i>PPIH</i>
Experimental	21.61	22.19	17.16	17.84	20.12	19.64	26.40
Control	33.13	26.47	18.20	18.48	20.57	19.50	26.55

$$\begin{aligned}\Delta Cq(\text{ref}) &= (\Delta Cq(\beta\text{-actin}) + \Delta Cq(\text{GAPDH}) + \Delta Cq(\text{LDHA}) + \Delta Cq(\text{NONO}) + \Delta Cq(\text{PPIH})) / 5 \\ &= ((17.16 - 18.20) + (17.84 - 18.48) + (20.12 - 20.57) + (19.64 - 19.50) + (26.40 - 26.55)) / 5 \\ &= -0.43\end{aligned}$$

$$\begin{aligned}\Delta Cq(\text{GOI1}) &= 21.61 - 33.13 \\ &= -11.52\end{aligned}$$

$$\begin{aligned}\Delta Cq(\text{GOI2}) &= 22.19 - 26.47 \\ &= -4.28\end{aligned}$$

$$\begin{aligned}\Delta\Delta Cq(\text{GOI1}) &= \Delta Cq(\text{GOI1}) - \Delta Cq(\text{ref}) \\ &= -11.52 - (-0.43) \\ &= -11.09\end{aligned}$$

$$\begin{aligned}\Delta\Delta Cq(\text{GOI2}) &= \Delta Cq(\text{GOI2}) - \Delta Cq(\text{ref}) \\ &= -4.28 - (-0.43) \\ &= -3.85\end{aligned}$$

$$\begin{aligned}\text{Normalized GOI1 expression level fold change} &= 2^{-\Delta\Delta Cq(\text{GOI1})} \\ &= 2^{11.09} \\ &= 2180\end{aligned}$$

$$\begin{aligned}\text{Normalized GOI2 expression level fold change} &= 2^{-\Delta\Delta Cq(\text{GOI2})} \\ &= 2^{3.85} \\ &= 14.4\end{aligned}$$

**Conclusion:** Upon treatment, expression level of GOI1 increased 2,180 fold, and expression level of GOI2 increased 14.4 fold.



**GeneQuery™ Human Cell Growth and Division qPCR Array Kit**  
**(GQH-CGD)**  
 Catalog #GK062

GeneQuery™ Human Cell Growth and Division qPCR Array Plate Layout\*  
 (*8 controls* in Bold and Italic)

	<b>1</b>	<b>2</b>	<b>3</b>	<b>4</b>	<b>5</b>	<b>6</b>	<b>7</b>	<b>8</b>	<b>9</b>	<b>10</b>	<b>11</b>	<b>12</b>
<b>A</b>	ADCY1	ANAPC2	BUB1	CCNE2	CDC27	EGF	KNTC1	NBN	PPP3CA	RAD17	TARDBP	<i><b>β-actin</b></i>
<b>B</b>	ADCY2	ANAPC4	BUB1B	CD28	CDK1	EREG	MAD2L1	NPM2	PPP3R1	RAD51	TGFA	<i><b>GAPDH</b></i>
<b>C</b>	ADCY3	ANAPC5	CALM1	CDC16	CDK2	ESPL1	MAD2L2	PAFAH1B1	PRKACA	RBX1	TGFB1	<i><b>LDHA</b></i>
<b>D</b>	ADCY8	ANAPC7	CAMK2A	CDC20	CDKN2B	FBXW11	MAP2K1	PBRM1	PRKACB	RPS6KA1	TTK	<i><b>NONO</b></i>
<b>E</b>	ANAPC1	ATM	CAMK2G	CDC23	CHEK1	IGF1	MAPK1	PKMYT1	PRKACG	SKP1	TTN	<i><b>PPIH</b></i>
<b>F</b>	ANAPC10	AURKA	CCNA2	CDC25B	CHP2	IGF1R	MAPK12	PLK1	PRKX	SMC1A	YWHAB	<i><b>GDC</b></i>
<b>G</b>	ANAPC11	BIRC5	CCNB1	CDC25C	CUL1	ITPR1	MAPK3	PPP1CA	PTTG1	SMC3	YWHAE	<i><b>PPC</b></i>
<b>H</b>	ANAPC13	BTRC	CCNB2	CDC26	DCTN1	ITPR2	MRE11A	PPP2CA	RAD1	STMN1	YWHAG	<i><b>NTC</b></i>

\* gene selection may be updated based on new research and development



## Appendix. Plate type choice chart.

---

### Plate type A

<b>Brand</b>	<b>Model</b>	<b>kit catalog #</b>
ABI / Life Tech	ABI 5700	GK062-A
	ABI 7000	GK062-A
	ABI 7300	GK062-A
	ABI 7500	GK062-A
	ABI 7700	GK062-A
	ABI 7900 HT	GK062-A
	QuantStudio	GK062-A
	ViiA 7	GK062-A
Bio-Rad	Chromo4	GK062-A
	iCycler	GK062-A
	iQ5	GK062-A
	MyiQ	GK062-A
	MyiQ2	GK062-A
Eppendorf / Life Tech	Matercyler ep realplex 2	GK062-A
	Matercyler ep realplex 4	GK062-A
Stratagene	MX3000P	GK062-A
	MX3005P	GK062-A

### Plate type B

<b>Brand</b>	<b>Model</b>	<b>kit catalog #</b>
ABI / Life Tech	ABI 7500 Fast	GK062-B
	ABI 7900 HT Fast	GK062-B
	QuantStudio Fast	GK062-B
	StepOnePlus	GK062-B
	ViiA 7 Fast	GK062-B
Bio-Rad	CFX Connect	GK062-B
	CFX96	GK062-B
	DNA Engine Opticon 2	GK062-B
Stratagene	MX4000	GK062-B

### Plate type C

<b>Brand</b>	<b>Model</b>	<b>kit catalog #</b>
Roche	Lightcycler 96	GK062-C
	Lightcycler 480 (96-well)	GK062-C