

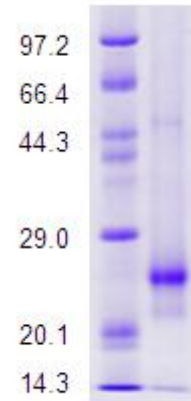
Recombinant Sortase A protein (His tag)

Storage: -20°C

FOR RESEARCH USE ONLY

NOT INTENDED FOR DIAGNOSTIC OR THERAPEUTIC USE

SDS-PAGE:



Product:

Package Contents	Cat. No.	Size
Sortase A	TB10007A	50 µg
Manual		1

Overview:

Sortase refers to a group of prokaryotic transpeptidase that attaches surface proteins covalently to the cell wall existing in almost all Gram-positive bacteria. It contains two sub-group, Sortase A and Sortase B. Sortase A (SrtA) can cleave between threonine and glycine at an LPXTG recognition motif in C-terminal (X means any aa except for cysteine and tryptophan).

Source:

expressed in *Escherichia coli*

Stability:

12 months at -70°C

Application(s):

Suitable for in vitro protein modification, ligation and purification etc.

Purity:

by SDS-PAGE: >= 90%

Storage Buffer:

50mM NaCl, 2.7mM KCl, 10mM Na₂HPO₄, 2mM KH₂PO₄, 0.04% Tween-20, 20% Glycerol, pH7.4

Shipping and Storage:

Shipped in Blue ice. Aliquot to avoid freeze / thaw cycle. Store at -70°C for long-term.