

Rab31

Catalog Number: 21063

Gene Symbol: RAB31

Description: Anti-Rab31 Rabbit Polyclonal Antibody

Background: Rab31 is a member of the Rab-subfamily of Ras-related small GTPases, and plays a role in the trans-Golgi network to endosome trafficking.

Immunogen: A synthetic peptide from the C-terminal region of human Rab31

Tested applications: ELISA, WB, IHC, IP

Recommended dilutions:

ELISA 1:100-1:5000

WB 1:100-1:2000

IHC 1:10-500

Concentration: 0.2 mg/ml

Host: Rabbit

Clonality: Polyclonal

Purity: Purified from serum

Format: Liquid

Storage buffer:

Preservative: no

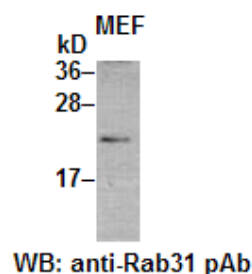
Constituents: PBS (without Mg^{2+} and Ca^{2+}), pH

7.4, 150 mM NaCl, 50% glycerol

Species Reactivity: Rab31 antibody recognizes Rab31 from vertebrates.

Storage Conditions: Store at $-20^{\circ}C$. Avoid freeze / thaw cycles

Western blot:



MEF cell lysate was used for Western blot with anti-Rab31 polyclonal antibody (cat # 21063).

For research use only. Not for diagnostic or therapeutic applications.

24 Whitewoods Lane, Malvern, PA 19355 Tel: (610) 945-2007 Fax: (610) 945-2008
E-mail: sale@neweastbio.com Web: www.neweastbio.com