

## Rab38

**Catalog Number:** 21081

**Gene Symbol:** RAB38

**Description:** Anti-Rab38 Rabbit Polyclonal Antibody

**Background:** Rab38 is a small GTPase highly expressed in melanocytes. A point mutation in Rab38 has been identified as the genetic lesion responsible for oculocutaneous albinism in chocolate mice. Another point mutation that prevents translation of Rab38 mRNA is the molecular basis of the Ruby gene mutation causing the phenotype of oculocutaneous albinism and prolonged bleeding time in Fawn-Hooded and Tester-Moriyama rats.

**Immunogen:** A synthetic peptide from the internal region of human Rab38 protein

**Tested applications:** ELISA, WB, IHC, IP

**Recommended dilutions:**

ELISA 1:100-1:5000

WB 1:100-1:1000

IHC 1:100-1:1000

**Concentration:** 0.2 mg/ml

**Host:** Rabbit

**Clonality:** Polyclonal

**Purity:** Purified from serum

**Format:** Liquid

**Storage buffer:**

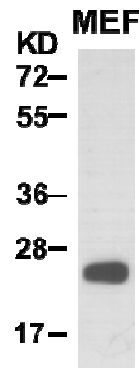
Preservative: no

Constituents: PBS (without Mg<sup>2+</sup> and Ca<sup>2+</sup>), pH 7.4, 150 mM NaCl, 50% glycerol

**Species Reactivity:** Rab38 antibody recognizes Rab38 proteins from vertebrates.

**Storage Conditions:** Store at -20°C. Avoid freeze / thaw cycles

**Western blot:**



**WB: anti-Rab38 pAb**

MEF whole-cell lysate was used for Western blot with anti-Rab38 polyclonal antibody (cat # 21081).

**For research use only. Not for diagnostic or therapeutic applications.**