

Rab3B

Catalog Number: 21042

Gene Symbol: RAB3B

Description: Anti-Rab3B Rabbit Polyclonal Antibody

Background: The Rab3 small G protein family consists of four members, Rab3A, -3B, -3C, and -3D. Rab3B is involved in peptidyl-cysteine methylation, protein transport, and regulation of exocytosis. It is located in cytosol, plasma membrane, stored secretory granule and synaptic vesicle.

Immunogen: A synthetic peptide near the C-terminus of Rab3B of human origin.

Tested applications: ELISA, WB, IHC, IP

Recommended dilutions:

ELISA 1:100-1:5000

WB 1:100-1:2000

IHC 1:10-100

Concentration: 0.15 mg/ml

Host: Rabbit

Clonality: Polyclonal

Purity: Purified from serum

Format: Liquid

Storage buffer:

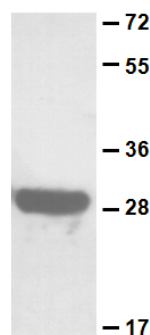
Preservative: no

Constituents: PBS (without Mg^{2+} and Ca^{2+}), pH 7.4, 150 mM NaCl, 50% glycerol

Species Reactivity: Rab3B antibody recognizes Rab3B from vertebrates.

Storage Conditions: Store at -20°C. Avoid freeze / thaw cycles

Western blot:



Purified His-tagged Rab3B protein (Cat. #10183) was used for Western blot with anti-Rab3B polyclonal antibody (Cat # 21042).

For research use only. Not for diagnostic or therapeutic applications.