

## Rab5B

**Catalog Number:** 21037

**Gene Symbol:** RAB5B

**Description:** Anti-Rab5B Rabbit Polyclonal Antibody

**Background:** Rab5, consists of three isoforms, Rab5A, Rab5B, and Rab5C, is a small GTPase that is localized to early endosomes. It regulates the fusion between endocytic vesicles and early endosomes, as well as the homotypic fusion between early endosomes.

**Immunogen:** A synthetic peptide from Rab5B

**Tested applications:** ELISA, WB, IHC

**Recommended dilutions:**

ELISA 1:100-1:5000

WB 1:100-1:1000

IHC 1:100-1000

**Concentration:** 0.2 mg/ml

**Host:** Rabbit

**Clonality:** Polyclonal

**Purity:** Purified from serum

**Format:** Liquid

**Storage buffer:**

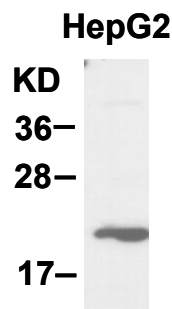
Preservative: no

Constituents: PBS (without  $Mg^{2+}$  and  $Ca^{2+}$ ), pH 7.4, 150 mM NaCl, 50% glycerol

**Species Reactivity:** Rab5B antibody recognizes Rab5B from vertebrates.

**Storage Conditions:** Store at -20°C. Avoid freeze / thaw cycles

### Western blot:



**WB: anti-Rab5B pAb**

Western blot analysis of Rab5B proteins. HepG2 cell lysate was used for Western blot with anti-Rab5B polyclonal antibody (cat # 21037).

**For research use only. Not for diagnostic or therapeutic applications.**

24 Whitewoods Lane, Malvern, PA 19355 Tel: (610) 945-2007 Fax: (610) 945-2008  
E-mail: [sale@neweastbio.com](mailto:sale@neweastbio.com) Web: [www.neweastbio.com](http://www.neweastbio.com)