

## Rab6A

**Catalog Number:** 21068

**Gene Symbol:** RAB6A

**Description:** Anti-Rab6A Rabbit Polyclonal Antibody

**Background:** The small GTPase Rab6 regulates vesicle trafficking at the level of Golgi. There are three forms of Rab6: Rab6A, Rab6A' (also called Rab6C) and Rab6B. Rab6A and Rab6C are splice variants of the same gene. Rab6A is localized in the Golgi and regulates a COPI-independent pathway of retrograde membrane transport from the Golgi complex to the endoplasmic reticulum.

**Immunogen:** A synthetic peptide from the internal region of human Rab6A protein

**Tested applications:** ELISA, WB, IHC

**Recommended dilutions:**

ELISA 1:100-1:5000

WB 1:100-1:1000

IHC 1:100-1:1000

**Concentration:** 0.2 mg/ml

**Host:** Rabbit

**Clonality:** Polyclonal

**Purity:** Purified from serum

**Format:** Liquid

**Storage buffer:**

Preservative: no

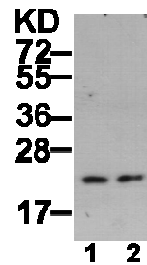
Constituents: PBS (without Mg<sup>2+</sup> and Ca<sup>2+</sup>), pH

7.4, 150 mM NaCl, 50% glycerol

**Species Reactivity:** Rab6A antibody recognizes Rab6A proteins from vertebrates.

**Storage Conditions:** Store at -20°C. Avoid freeze / thaw cycles

**Western blot:**



**WB: anti-Rab6A pAb**

HEK-293T (lane 1) and MEF (lane 2) whole-cell extracts were used for Western blot with anti-Rab6A polyclonal antibody (cat # 21068).

**For research use only. Not for diagnostic or therapeutic applications.**