

Rab9A

Catalog Number: 21073

Gene Symbol: RAB9A

Description: Anti-Rab9A Rabbit Polyclonal Antibody

Background: Ras-related protein Rab-9A mediates late endosome to trans-Golgi transport. Recently Rab9 has been implicated as a key cellular component for human HIV, Ebola, Marburg, and measles virus replication.

Immunogen: A synthetic peptide from the C-terminal of human Rab9A protein

Tested applications: ELISA, WB, IHC, IP

Recommended dilutions:

ELISA 1:100-1:5000

WB 1:100-1:1000

IHC 1:50-1:100

Concentration: 0.2 mg/ml

Host: Rabbit

Clonality: Polyclonal

Purity: Purified from serum

Format: Liquid

Storage buffer:

Preservative: no

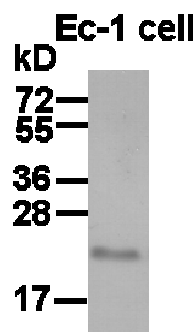
Constituents: PBS (without Mg^{2+} and Ca^{2+}), pH

7.4, 150 mM NaCl, 50% glycerol

Species Reactivity: Rab9A antibody recognizes Rab9A proteins from vertebrates.

Storage Conditions: Store at -20°C. Avoid freeze / thaw cycles

Western blot:



Wb: anti-Rab9A pAb

EC-1 whole-cell lysate was used for Western blot with anti-Rab9A polyclonal antibody (cat # 21073).

For research use only. Not for diagnostic or therapeutic applications.

24 Whitewoods Lane, Malvern, PA 19355
E-mail: sale@neweastbio.com

Tel: (610) 945-2007 Fax: (610) 945-2008
Web: www.neweastbio.com