

Rab-4A

Catalog Number: 21158

Gene Symbol: RAB4A

Description: Anti-Rab-4A Rabbit Polyclonal Antibody

Background: Rab-4A belongs to the small GTPase Rab family. It interacts with RAB11FIP1, RABEP1, ZFYVE20, RUFY1, SGSM1, SGSM2 and SGSM3. It participates in protein transport and in vesicular traffic.

Immunogen: Purified Rab-4A protein.

Tested applications: ELISA, WB, IHC, IP

Recommended dilutions:

ELISA 1:100-1:5000

WB 1:100-1:2000

IHC 1:10-100

Concentration: 0.15 mg/ml

Host: Rabbit

Clonality: Polyclonal

Purity: Purified from serum

Format: Liquid

Storage buffer:

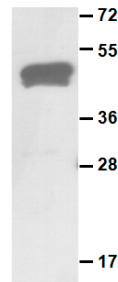
Preservative: no

Constituents: PBS (without Mg²⁺ and Ca²⁺), pH 7.4, 150 mM NaCl, 50% glycerol

Species Reactivity: Rab-4A antibody recognizes Rab-4A proteins from vertebrates.

Storage Conditions: Store at -20°C. Avoid freeze / thaw cycles

Western blot:



Purified GST-tagged Rab-4A proteins (Cat.#10130) were used for Western blot with anti-Rab-4A polyclonal antibody (Cat. #21158).

For research use only. Not for diagnostic or therapeutic applications.