

Ras

Catalog Number: 21159

Gene Symbol: RAS

Description: Anti-Ras Rabbit Polyclonal Antibody

Background: Small GTPases are a super-family of cellular signaling regulators. Ras belongs to the Ras sub-family of GTPases that regulate cell proliferation, cell motility, and gene transcription. GTP binding increases the activity of Ras, and the hydrolysis of GTP to GDP renders it inactive. GTP hydrolysis is aided by GTPase activating proteins (GAPs), while exchange of GDP for GTP is facilitated by guanine nucleotide exchange factors (GEFs).

Immunogen: Recombinant Ras protein

Tested applications: ELISA, WB, IHC, IP

Recommended dilutions:

ELISA: 1:1000-1:5000

WB: 1:100-1:1000

IHC: 1:10-1:100

Concentration: 0.1 mg/ml

Host: Rabbit

Clonality: Polyclonal

Purity: Purified from serum

Format: Liquid

Storage buffer:

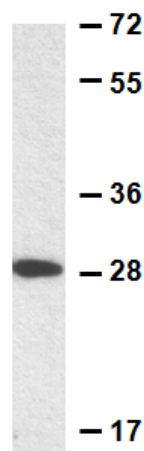
Preservative: no

Constituents: PBS (without Mg^{2+} and Ca^{2+}), pH 7.4, 150 mM NaCl, 50% glycerol

Species Reactivity: Anti-Ras antibody recognizes H-, K-, and N-Ras proteins of vertebrates.

Storage Conditions: Store at -20°C. Avoid freeze / thaw cycles

Western blot:



Western blot analysis of recombinant His-Ras proteins. His-tagged Ras protein (Cat. #10172) was blotted with the polyclonal anti-Ras antibody (Cat. #21159).

For research use only. Not for diagnostic or therapeutic applications.

24 Whitewoods Lane, Malvern, PA 19355 Tel: (610) 945-2007 FAX: (610) 945-2008
E-mail: sale@neweastbio.com Web: www.neweastbio.com