

Rap1B

Catalog Number: 21156

Gene Symbol: RAP1B

Description: Anti-Rap1B Rabbit Polyclonal Antibody

Background: Small GTPases are a super-family of cellular signaling regulators. Rap family members (Rap1A, Rap1B, Rap2A, Rap2B, and Rap2C) are Ras-like GTPases that regulate cell proliferation, differentiation, apoptosis and adhesion mechanisms. Rap1 (Ras-proximate-1) regulates apoptosis through interaction with two MAP3K effectors of the MEK/ERK MAP-kinase pathway, Raf-1 and B-Raf. Rap1 regulates cell adhesion mechanisms through effector molecules such as the integrins and cadherins.

Immunogen: Purified His-tagged Rap1B protein.

Tested applications: ELISA, WB, IHC, IP

Recommended dilutions:

ELISA: 1:1000-1:5000

WB: 1:100-1:1000

IHC: 1:100-1:1000

Concentration: 0.2 mg/ml

Host: Rabbit

Clonality: Polyclonal

Purity: Purified from serum

Format: Liquid

Storage buffer:

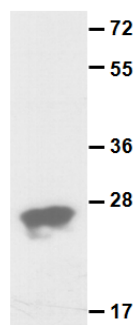
Preservative: no

Constituents: PBS (without Mg^{2+} and Ca^{2+}), pH 7.4, 150 mM NaCl, 50% glycerol

Species Reactivity: Anti-Rap1B antibody recognizes Rap1B proteins from vertebrates.

Storage Conditions: Store at -20°C. Avoid freeze / thaw cycles

Western blot:



Purified His-tagged Rap1B protein (Cat. #10120) was used for western blot with the polyclonal anti-Rap1B antibody (Cat. # 21156).

For research use only. Not for diagnostic or therapeutic applications.

24 Whitewoods Lane, Malvern, PA 19355

E-mail: sale@neweastbio.com

Tel: (610) 945-2007 FAX: (610) 945-2008

Web: www.neweastbio.com