

# His Tag Antibody, Mouse MAb



Sino Biological  
Biological Solution Specialist

Catalog Number: 105327-MM02T

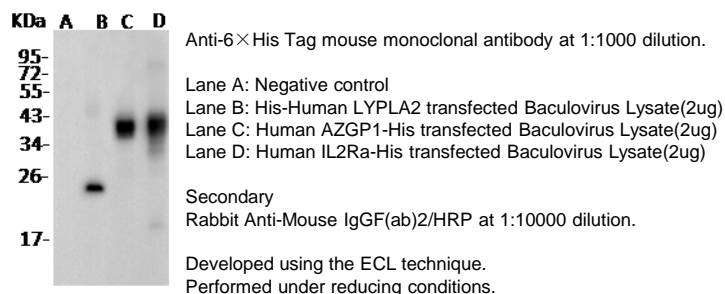
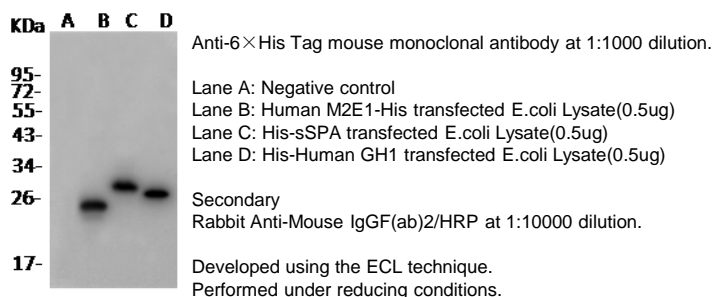
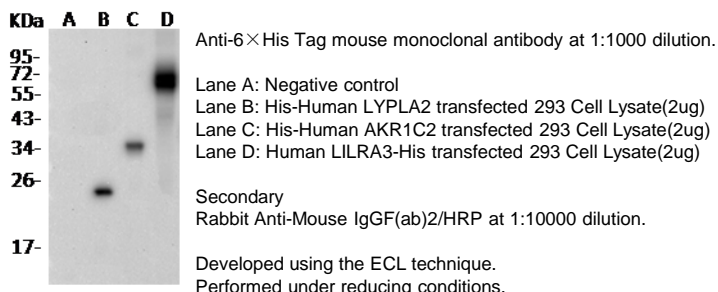
General Information	
Immunogen:	A synthetic peptide corresponding to 6×His
Preparation :	This antibody was produced from a hybridoma resulting from the fusion of a mouse myeloma with B cells obtained from a mouse immunized with a synthetic peptide. The IgG fraction of the cell culture supernatant was purified by Protein A affinity chromatography.
Clone ID:	02
Applications:	WB
Specificity:	Recognize 6×His Tag in fusion proteins.
Formulation:	0.2 µm filtered solution in PBS
Storage:	This antibody can be stored at 2℃-8℃ for one month without detectable loss of activity. Antibody products are stable for twelve months from date of receipt when stored at -20℃ to -80℃. <b>Preservative-Free.</b> Sodium azide is recommended to avoid contamination (final concentration 0.05%-0.1%). It is toxic to cells and should be disposed of properly. <b>Avoid repeated freeze-thaw cycles.</b>

## Applications

### Western blot –

WB: 1/1000-1/10000

### Recognize His tag fusion proteins (Mammalian cell, E. coli, Baculovirus expression system)



Manufactured By Sino Biological Inc., FOR RESEARCH USE ONLY. NOT FOR USE IN HUMANS.

Tel: 215-583-7898 (US); +86-400-890-9989(Global) • <http://www.sinobiological.com>

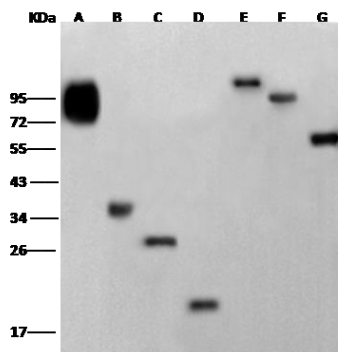
# His Tag Antibody, Mouse MAb



Sino Biological  
Biological Solution Specialist

Catalog Number: 105327-MM02T

## Recognize His tag at N-terminal of the protein



Anti-6×His Tag mouse monoclonal antibody at 1:1000 dilution.

Sample: Recombinant Protein

Lane A: His-Human TPO(100ng)  
Lane B: His-Mouse CLEC7A(200ng)  
Lane C: His-Human LYPLA2(50ng)  
Lane D: His-Human COCH(200ng)  
Lane E: His-Mouse TFRC(100ng)  
Lane F: His-Human HSPA1A(100ng)  
Lane G: His-Human PA2G4(50ng)

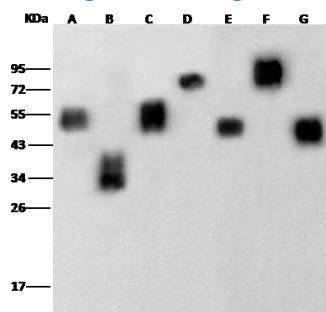
Secondary

Rabbit Anti-Mouse IgG(ab)2/HRP at 1:10000 dilution.

Developed using the ECL technique.

Performed under reducing conditions.

## Recognize His tag at C-terminal of the protein



Anti-6×His Tag mouse monoclonal antibody at 1:1000 dilution.

Sample: Recombinant Protein

Lane A: Human LRG1-His(50ng)  
Lane B: Human 4-1BB-His(50ng)  
Lane C: Human SLAMF1-His(50ng)  
Lane D: Human ALPL-His(100ng)  
Lane E: Human IL2Ra-His(50ng)  
Lane F: Human IL6R-His(50ng)  
Lane G: Human AZGP1-His(100ng)

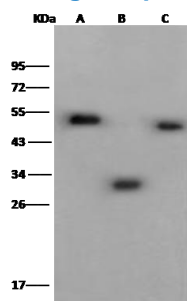
Secondary

Rabbit Anti-Mouse IgG(ab)2/HRP at 1:10000 dilution.

Developed using the ECL technique.

Performed under reducing conditions.

## Recognize protein with His tag (internal)



Anti-6×His Tag mouse monoclonal antibody at 1:1000 dilution.

Sample: Recombinant Protein

Lane A: TrxA-His-EK-Human APOE(100ng)  
Lane B: TrxA-His-EK-Human BCL6(100ng)  
Lane C: Trx-His-EK-Human SOCS3(100ng)

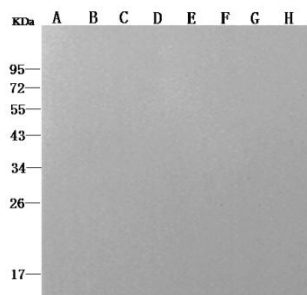
Secondary

Rabbit Anti-Mouse IgG(ab)2/HRP at 1:10000 dilution.

Developed using the ECL technique.

Performed under reducing conditions.

## Negative binding protein without His tag



Anti-6×His Tag mouse monoclonal antibody at 1:1000 dilution.

Sample: Recombinant Protein

Lane A: Human C100RF54-Fc(100ng)  
Lane B: Rat B7H5-Fc(100ng)  
Lane C: Rhesus C9H10orf54-Fc(100ng)  
Lane D: S3-Mouse ALK6-Fc(100ng)  
Lane E: Human LAG3-Fc(100ng)  
Lane F: GST-Human MKI67(100ng)  
Lane G: GST-Human CD247(100ng)  
Lane H: MYC-GST(100ng)

Secondary

Rabbit Anti-Mouse IgG(ab)2/HRP at 1:10000 dilution.

Developed using the ECL technique.

Performed under reducing conditions.

Manufactured By Sino Biological Inc., FOR RESEARCH USE ONLY. NOT FOR USE IN HUMANS.

Tel: 215-583-7898 (US); +86-400-890-9989(Global) • <http://www.sinobiological.com>

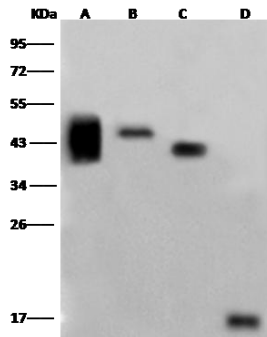
# His Tag Antibody, Mouse MAb



Sino Biological  
Biological Solution Specialist

Catalog Number: 105327-MM02T

## Recognize the protein with 6×His tag



Anti-6×His Tag mouse monoclonal antibody at 1:1000 dilution.

Sample: Recombinant Protein

Lane A: His-Mouse TNFSF9(50ng)

Lane B: His-Human AKR1C2(200ng)

Lane C: His-Human LYPLA2(50ng)

Lane D: Human MOG-His(100ng)

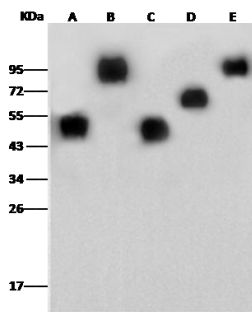
Secondary

Rabbit Anti-Mouse IgG(ab)2/HRP at 1:10000 dilution.

Developed using the ECL technique.

Performed under reducing conditions.

## Recognize the protein with 10×His tag



Anti-10×His Tag mouse monoclonal antibody at 1:1000 dilution.

Sample: Recombinant Protein

Lane A: Human IL2Ra-His(50ng)

Lane B: Human IL6R-His(50ng)

Lane C: Human AZGP1-His(100ng)

Lane D: Human ART3-His(20ng)

Lane E: Human LILRA3-His(20ng)

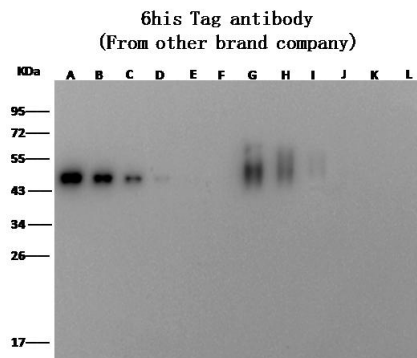
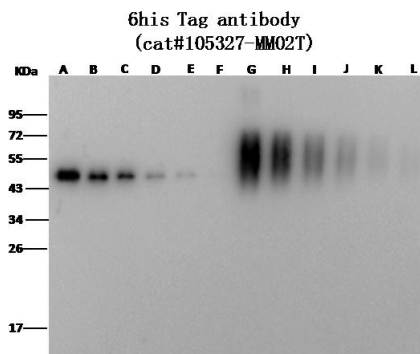
Secondary

Rabbit Anti-Mouse IgG(ab)2/HRP at 1:10000 dilution.

Developed using the ECL technique.

Performed under reducing conditions.

## Detection Limit



Anti-6×His Tag mouse monoclonal antibody at 1:1000 dilution.

Sample: Recombinant Protein

Lane A: His-Human PA2G4(10ng)

Lane B: His-Human PA2G4(5ng)

Lane C: His-Human PA2G4(2ng)

Lane D: His-Human PA2G4(1ng)

Lane E: His-Human PA2G4(0.5ng)

Lane F: His-Human PA2G4(0.2ng)

Lane G: Human B7-2-His(10ng)

Lane H: Human B7-2-His(5ng)

Lane I: Human B7-2-His(2ng)

Lane J: Human B7-2-His(1ng)

Lane K: Human B7-2-His(0.5ng)

Lane L: Human B7-2-His(0.2ng)

Secondary

Rabbit Anti-Mouse IgG(ab)2/HRP at 1:10000 dilution.

Developed using the ECL technique.

Performed under reducing conditions.

Manufactured By Sino Biological Inc., FOR RESEARCH USE ONLY. NOT FOR USE IN HUMANS.

Tel: 215-583-7898 (US); +86-400-890-9989(Global) • <http://www.sinobiological.com>