

Ar11-GTP

Catalog Number: 26924

Gene Symbol: ARL1

Description: Anti-Ar11-GTP Mouse Monoclonal Antibody

Background: Arl1 (Arf-like 1) localizes to the Golgi complex, where it is believed to recruit effector proteins to the trans-Golgi network. Golgi-localized proteins golgin-97 and golgin-245 have been shown as Arl1 effectors. Additional Arl1 effectors include the GARP (Golgi-associated retrograde protein)/VFT (Vps53) vesicle-tethering complex and Arfaptin 2. In *Drosophila* zygotes, mutation of Arl1 is lethal.

Immunogen: Recombinant Arl1 protein (active form)

Tested Applications: IP, IHC, IF

Recommended Dilutions:

1 µg for 1~2 mg total cellular proteins for IP

1:50~100 dilutions for IHC and IF

Concentration: 1 mg/ml

Isotype: IgG

Host: Mouse

Clonality: Monoclonal

Purity: Purified from ascites

Format: Liquid

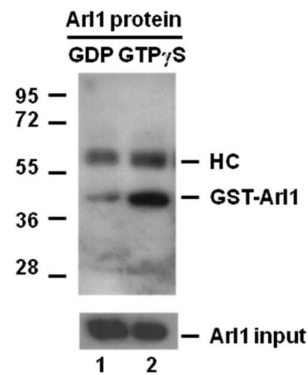
Preservative: No

Constituents: PBS (without Mg²⁺ and Ca²⁺), pH 7.4, 150 mM NaCl, 50% glycerol.

Species Reactivity: Anti-Ar11-GTP antibody recognizes active Arl1-GTP from vertebrates.

Storage Conditions: Store at -20°C. Avoid freeze / thaw cycles.

Immunoprecipitation and Western blot:



IP: anti-active Arl1 mAb

IB: anti-Arl1 mAb

Arl1 Activation Assay.

Purified GST-tagged Arl1 proteins (Cat. # 10136) were immunoprecipitated with the anti-Arl1-GTP monoclonal antibody (Cat. # 26924) after treated with GDP (lane 1) or GTPγS (lane 2), and was blotted with anti-Arl1-GTP monoclonal antibody (Cat.# 26056). Arl1 protein input control is shown in the bottom panel.

FOR RESEARCH USE ONLY. NOT FOR DIAGNOSTIC APPLICATIONS